

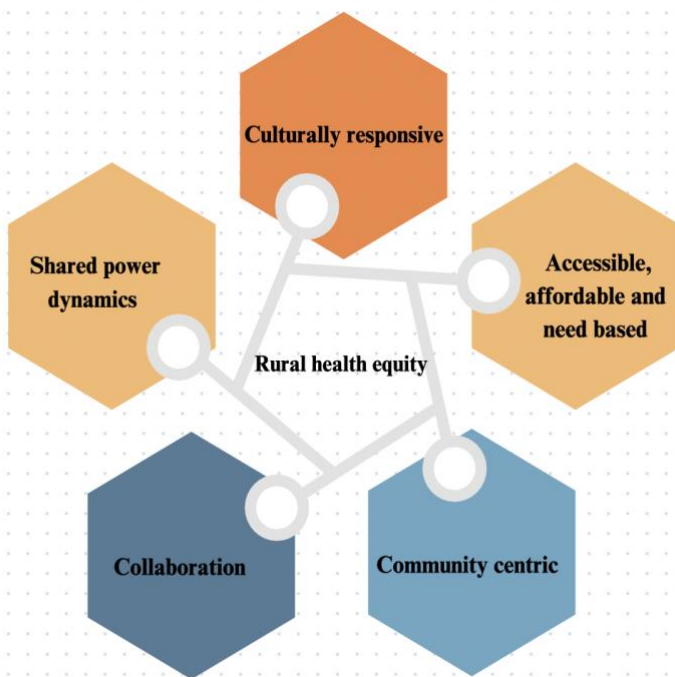
## Responding to Community Leader Needs: A Rural Roundtable Focusing on Health Equity

### *The Challenge*

Critical resources are often out of reach for community leaders working to advance racial and health equity on a local level. Existing resources to address equity commitments typically flow toward a narrow range of interventions with easily measurable actions and a large body of evidence, which are frequently implemented by well-resourced organizations with no direct relationships to communities or residents who have lived through inequities.

These resources are typically concentrated in urban and suburban

areas, reinforcing, and exacerbating the unique inequities that rural communities face. The proposed effort is centered on bridging the gap between what rural communities require and what health systems can provide. Shift’s shared vision through this project is for communities to have the ability and resources to improve their quality of life.



### *Objectives guiding the project*

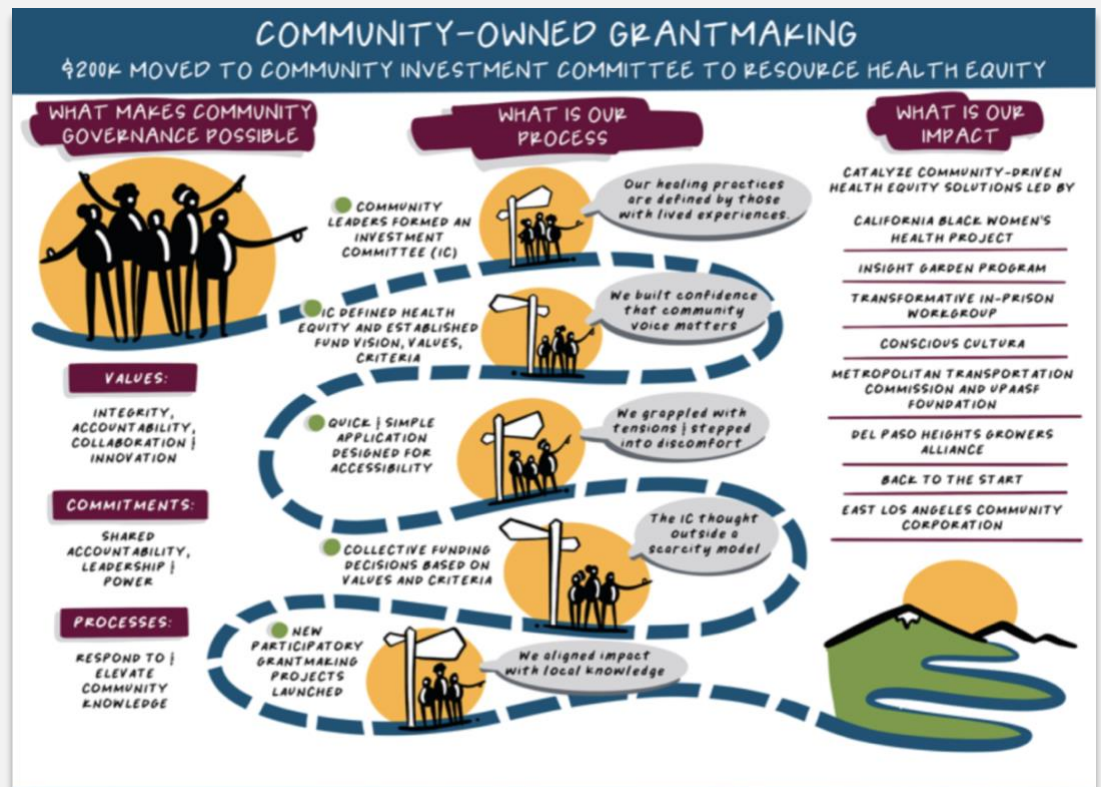
Cultivate and expand a multidisciplinary network of rural health equity leaders and innovators.

Co-create a bold and holistic vision for rural health- new narratives, transformational systems change.

Increase investments in community-driven and owned health equity innovations.

Create and test mechanisms for community control of resources, decision-making and data to advance health equity.

*In 2022 Shift Health Accelerator, Interwoven, and Vertical Strategies partnered to host a national rural roundtable with RWJF leaders (COHL, Policy, Interdisciplinary, & Clinical Scholars) in hopes of better understanding the challenges that exist in the rural space and how these leaders are responding to these challenges.*



**Proposed Solutions- Rural Clinic Concept**

The Shift Clinic will be structured as a combination of individual technical assistance, small group gatherings for shared learning and strategy, launch of a rural health participatory grantmaking fund, and network approaches to healthcare accountability focused on increasing investments in rural community-led change. Clinic participants will come from the Culture of Health Leaders program, specifically drawing from a recently formed group of leaders working to advance health in rural communities. Members of the Investment Committee will come from Clinic participants and community partners with whom those leaders work closely.

