

**Expanding Data Sources for SCAG's Active Transportation Database:
Adding Permanent Bicycle & Pedestrian Counters**
Emily Beglarian, Claremont Graduate University

Who is SCAG?

Southern California Association of Governments, or SCAG, is the country's largest council of governments. SCAG serves as the metropolitan planning organization (MPO) for over 18 million people in Southern California. The SCAG region contains 6 counties, including Los Angeles County, and covers almost 40,000 square miles. SCAG's work includes sectors such as transportation, sustainability, and housing.

What is Active Transportation?

Active transportation "refers to human powered transportation and low speed electronic assist devices" (SCAG). This includes transportation such as biking, walking, and scootering. Active transportation is a healthy alternative to car travel, and an effective way to reduce air pollution! According to the American Public Health Association, active transportation can have a significant impact on public health.

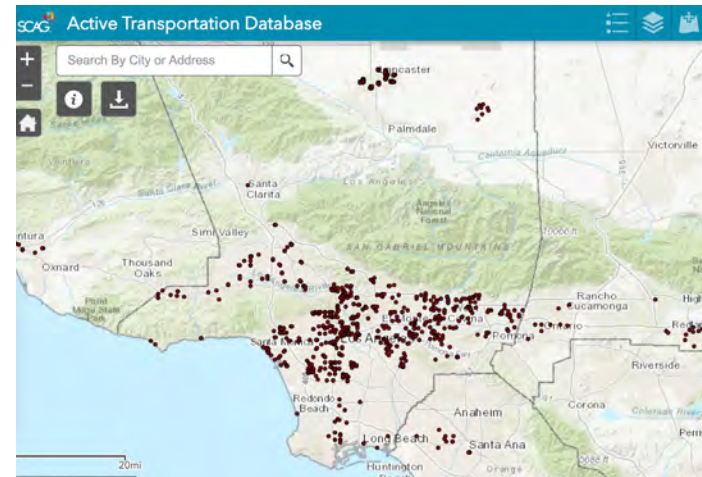
"Making active transportation a realistic, affordable and convenient option for all transportation users would help reduce health impacts and also promote physical activity, recreation and environmental preservation."
- American Public Health Association



California's Active Transportation Program

The majority of funding for SCAG's Active Transportation projects is provided by the California Active Transportation Program. This program was created in 2013 by Senate Bill 99 and Assembly Bill 101 to consolidate existing transportation programs. The Active Transportation Program has six main goals, two of which are significantly related to public health:

- The enhancement of public health, including (but not limited to) the reduction of childhood obesity
- Confirming that disadvantaged communities are able to share equally in the benefits of the program.



The Active Transportation Database was developed to collect and store active transportation data, such as bicycle and pedestrian counts, across the SCAG region. The Active Transportation Database (ATDB) was developed with the intention to support active transportation planning by cumulating historical and current active transportation data. This data can be used while considering future plans and policies within the SCAG region. The database was recently made to be compatible with automated permanent counter technology.

Fellow Tasks:

Incorporate new data sources into the Active Transportation Database by acquiring access to agencies' automated counter data and adding it into the ATDB. In total, 12 counters were added from San Luis Obispo Council of Governments and the cities of Long Beach, Santa Monica, and Ventura. The ATDB now has access to past and current data from these locations.



Impact and Considerations

- The Active Transportation Database now has multiple locations where longitudinal trends can be observed over multiple years. These trends can be used in program planning and policy development.
- Although automated permanent counter technology is useful, it is also expensive. Agencies with low Active Transportation budgets may not have the ability to purchase permanent counters.
- In the future, SCAG may consider developing a grant program to assist agencies with funding to purchase automated permanent counter technology.

References

- About. (n.d.). Active Transportation Database. <https://atdb.scaq.ca.gov/Pages/About.aspx>
- Active Transportation. (n.d.). Southern California Association of Governments. <https://scaq.ca.gov/active-transportation>
- APHA. (n.d.). Active Transportation: Benefitting health, safety, and equity. https://www.apha.org/-/media/files/pdf/topics/transport/apha_active_transportation_fact_sheet_2010.ashx?la=en&hash=E2DD3E9B1BFD861B57C490A5FA0FC18FC201FE15