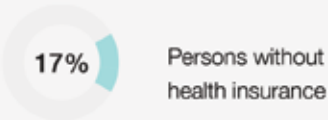
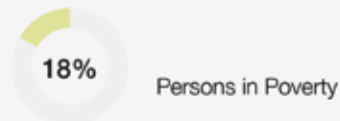
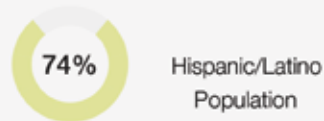


## Montclair Demographics

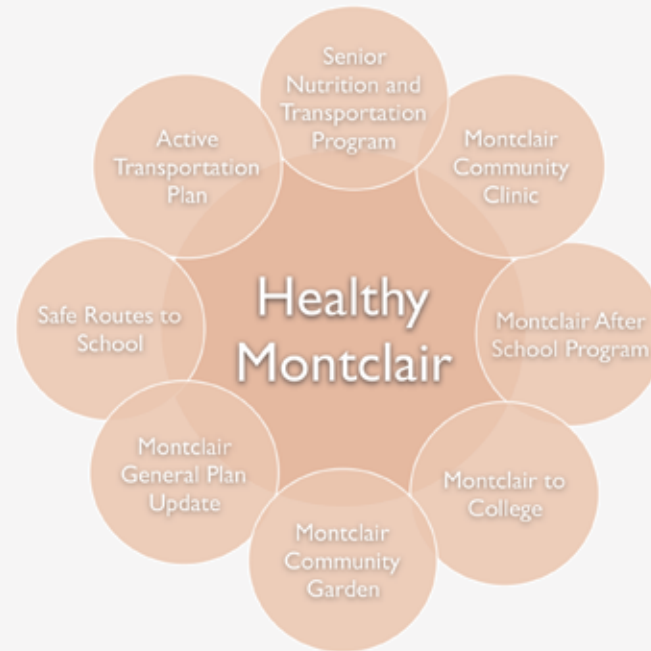
Total population= 38,686



## Healthy Montclair Initiative



City of Montclair, Human Services Department  
Ixel Hernandez, MPHc, Randall Lewis Health Policy Fellow, USC



The Healthy Montclair Initiative is composed of a variety of different programs aimed at supporting the overall health and well-being of Montclair residents. Each program focuses on meeting a different sector of the populations needs.



## City of Montclair Human Services Department

The City of Montclair Human Services Department directs the Healthy Montclair Initiative. Below is a list of current programs:

- 1) Montclair to College
- 2) Montclair Community Garden
- 3) Montclair General Plan Update
- 4) Active Transportation Plan: Safe Routes to School Plan
- 5) Senior Transportation
- 6) Senior Nutrition
- 7) Montclair Community Clinic
- 8) Montclair After School Program