



Telemedicine & the SCAG Region Amid the COVID-19 Pandemic  
 Current Efforts & Future Recommendations  
 Jeffrey Massin, MPH(c)

## Reshaping Accessibility & Delivery

The SCAG Regions' 6 Counties (Los Angeles, Orange, San Bernardino, Ventura, Riverside, & Imperial) are home to large amounts of diversity. Age, gender, race/ethnicity, and built/natural environment are affluent between counties. This means that SCAG is able to study diverse enclaves of health outcomes/trends and develop proposals specific to these communities.

Every four years, SCAG releases regional transportation plans that are viewed as investments towards economic, environmental, and quality of life goals. As millions of people depend on transportation modes, it is important to integrate public health into discussions to address not only needs for transportation but needs of the SCAG communities..

## Comparison of Health Focus Areas



**Figure 1. Office of Disease Prevention & Health Promotion Social Determinants of Health (SDOH)**

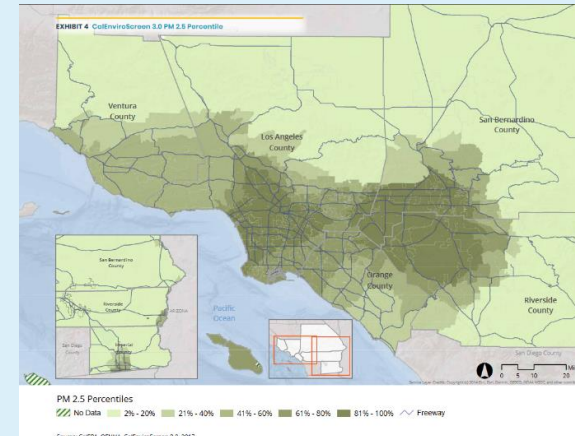
1. Social and Community Context
2. Health and Health Care
3. Economic Stability
4. Education
5. Neighborhood and Built Environment.



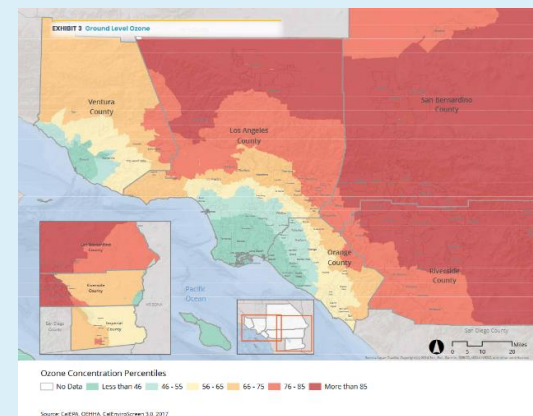
**Figure 2. SCAG's Public Health Focus Areas**

1. Access to Essential Services
2. Affordable Housing
3. Air Quality
4. Climate Change
5. Economic Opportunity
6. Physical Activity
7. Transportation Safety

## Examples of Efforts



**Figure 3. PM 2.5 Percentiles**



**Figure 4. Ozone Concentration Percentiles**

### Pollutants (PM & Ozone)

By identifying high areas of pollution, SCAG can gain insight on high priority areas for pollution and develop proposals and goals for these areas. Both maps can provide insight can also paint a picture of why these pollutants occur, how communities health is impacted, and possible solutions.

### Other Examples of Surveillance/Research That Affect Public Health

- Housing Affordability
- Access to Mobility
- Access to Healthy Foods
- Climate Change
- Economic Opportunities

## Recommendations

### Continue harboring Collaboration & Engagement at the Regional Level

- Data Sharing (maps, demographics, analysis)
- Pursue more engagement/maintain relationships with stakeholders

### Policy Support

- Pursue relationships with public health schools
- Expand fellowship opportunities for public health students
- Update/maintain access to public health data for the SCAG region

### Support at the Regional Level

- Provide technical assistance (ie. technology based task)
- Reduce knowledge gaps in public health knowledge through informational pamphlets/trainings.
- Identify grant opportunities & relay them to city level teams.